

MUE-CAN User Quick Start Manual

Thank you for using MUE-CAN expansion cards independently developed and produced by MEGMEET, which mainly works with basic module to complete CAN communication functions. Before using the product, please carefully read this manual so as to better understand it, fully use it, and ensure safety.

This manual is suitable for the following members of the MU200 series expansion card:

MUE-CAN	CAN communication expansion card
---------	----------------------------------

Version Number: A01

Data: 2023-01-08

BOM Code: R33011033

For detailed product information, please refer to *MU200 Series PLC User Manual*, *MU200 Series PLC Programming Reference Manual*. For ordering the above user manuals, contact your Megmeet distributor or download from MEGMEET website (www.megmeet.com).

1. Terminal Definition

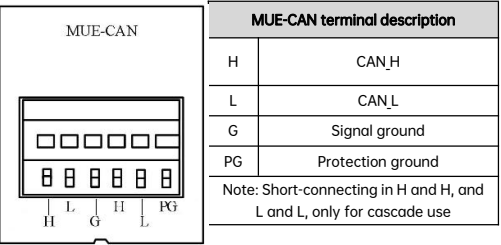


Fig 1-1 Terminal definition and description

2. Installation

- ◆ Pull upward from the left edge of expansion card to open the cover plate one by one when the main module is powered off;
- ◆ Insert the expansion card pin header into the base accurately and vertically;
- ◆ Install two tapping screws to fix the expansion card and cover the plate;
- ◆ Wire external signal.

**Note:** Do not plug or remove with power-on!

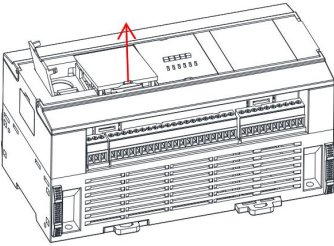


Fig 2-1 Expansion card installation diagram

3. Cable connection and specification

It is recommended to use shielded twisted pair cable to ensure connection quality. The following table lists the sectional areas and models of the recommended cables.

Table 3-1 Model of recommended cable				
Cable	Cross-section	Cable number	Strip length	Terminal
Signal	0.5~0.8mm <sup>2</sup>	AWG18、20	8.0~9.0mm	Tinning
Ground	0.8mm <sup>2</sup>	AWG18	8.0~9.0mm	Tinning

**Note:** Insert the wire smoothly instead of using explosive force.

4. Technical Parameter

Table 4-1 CAN specification	
Item	Technical Specification
Channel quantity	1
Bus rate	50K, 100K, 125K, 250K and 1M (Max.)
Bus protocol	CAN2.0A, CAN2.0B
Terminal resistance	120Ω (Optional)
Isolation mode	CAN communication dedicated isolators

Note: A basic module can extend up to two CAN expansion cards, but only one can be used as a CANOPEN master station.

5. Wiring Requirement

Note for wiring:

- ① It is recommended to use shielded twisted pair cable as communication line and stay away from power line.
- ② The master terminal and the last node of the slave terminal need to be connected with 120Ω terminal resistors.
- ③ In long-distance communication, the signals of different CAN devices must be connected to the ground to ensure equal reference potentials between different communication devices.

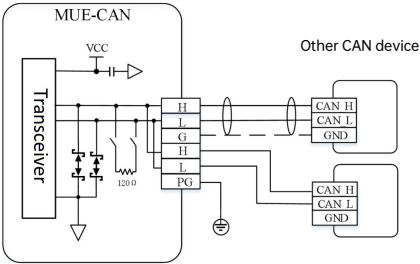


Fig 5-1 External wiring diagram of MUE-CAN

Terminal matching resistance selection method: Take out the CAN expansion board, and a 2-bit dial switch S1 can be seen on the back of the board. The default state is OFF and no matching resistance is connected. Turn all switches to the ON to connect the resistor into the circuit, as shown in the following figure.

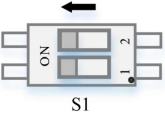


Fig 5-2 Dial switch

6. Configuration

Unit Configuration: Program Manager → double-click Units Configuration;  
Click the Extension Module to select Main Module and MUE-CAN, and then  
drag them to the configuration screen, as shown in Figure 6-1.

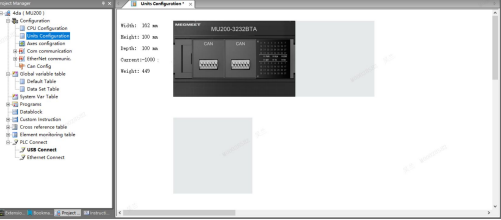


Fig. 6-1 Unit configuration interface

Communication Parameter: After the unit configuration is completed, click  
Save file, and the sub-directories MUE-CAN1 [MU200] and MUE-CAN2  
[MU200] will be generated in the CANOpen Configuration. Double-click  
CAN1 or CAN2 to set the CAN communication parameters.

7. Routine Inspection

- 1. Check that the wiring meets requirements.
- 2. Check that the extension card is properly inserted in the extension port of  
main module.

- 3. Check the application, make sure that the correct module configuration  
and parameter setting range are selected.
- 4. Set the MU200 main module to RUN to check the ERR light status.

8. Indicator and Fault Inspection

Phenomenon	Possible cause	Solution
ERR light flashes	No expansion card connection in background configuration	Check the expansion card information in the PLC information column in the background to ensure that the configuration is correct
	Expansion card configuration error in background	
No expansion card in information column/Information inconsistency	No insertion of expansion card	Connect the expansion card to the main module accurately.
	Expansion card damage	Contact the manufacturer
Unable to communicate	Poor cable connection or wrong connection signal	Connect the signal lines correctly

	property, e.g. H and L are connected in reverse	
	Master and slave parameters are inconsistent, such as bus rate, protocol	<div>Set the bus rate to be consistent</div> <div>Set the protocol to be consistent</div>

Notice

- 1. The warranty range is confined to the PLC only.
- 2. Warranty period is 18 months, within which period Megmeet conducts  
free maintenance and repairing to the PLC that has any fault or damage  
under the normal operation conditions.
- 3. The start time of warranty period is the delivery date of the product, of  
which the product SN is the sole basis of judgment. PLC without a product  
SN shall be regarded as out of warranty.
- 4. Even within 18 months, maintenance will also be charged in the following  
situations:

- Damages incurred to the PLC due to mis-operations, which  
are not in compliance with the User Manual;
- Damages incurred to the PLC due to fire, flood, abnormal  
voltage, etc;
- Damages incurred to the PLC due to the improper use of PLC  
functions.
- Remove the PLC personally.

- 5. The service fee will be charged according to the actual costs. If there is  
any contract, the contract prevails.
- 6. If you have any question, please contact the distributor or our company  
directly.

Shenzhen Megmeet Electrical Co.,Ltd

Add: 5th Floor, Block B Unisplendour Information Harbor, Langshan Road,  
Shenzhen, 518057, China

Tel: 400-666-2163                      (+86) 0755-86600500

Fax: (+86)0755-86600999

Zip: 518067

Website: [www.megmeet.com](http://www.megmeet.com)